



## Refurbished Second Hand

### Saws

#### TRK/D/SY 630 year 2003

Planetary saw for knife cutting single-, double- and triple-walled corrugated PE pipes. Can also be used for PP pipes (only certain wall thicknesses). Suitable for pipe diameters from 110 to 800mm.

*Advantages and key features:*

Electronic cutting point search system.

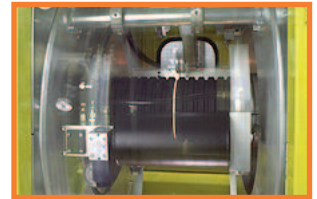
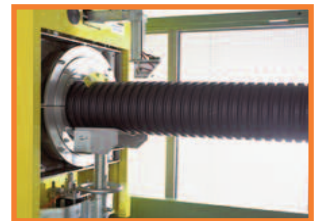
Cut centred between the corrugated pipe grooves.

Synchronisation. Allows adjustment of carriage speed as extrusion speed varies, and means the point to be cut can be reached more quickly, hence reducing cycle time.

High knife rotation speed. Quick, accurate cuts guaranteed.

Optional cutting length control. Assures cuts to preset lengths based on the number of corrugations.

Condition: **Refurbished**



The above 2 photos are purely indicative of the model and does not correspond to the TRK/D/SY 630 year 2003 described on the side

#### TRS/C/SY/U 125 year 2004

Planetary saw for rigid plastic pipes with diameters from 10 up to 125mm.

*Advantages and key features:*

Combined cutting system. It consists in two arms, one with a cutting disc and/or milling cutter, and the other with a knife only. The arm with the disc and/or cutter cuts the pipe to a given depth first, and the arm with the knife then completes the cut through the remaining wall thickness. No chips get inside the pipe.

Chamfer depth adjustable

Short cutting cycle suitable for high extrusion speeds.

Dynamically balanced cutting rotor. Allows accurate cutting even at high speeds.

Chip extraction system.

Universal clamps. Eight-armed clamps with rubber pads, assuring excellent grip, even on PE pipes. Cuts different diameters without operator intervention

Speed synchronisation. No need to adjust carriage speed as extrusion speed varies.

Condition: **Refurbished**



The above photo is purely indicative of the model and does not correspond to the TRS/C/Sy/U 125 year 2004 described on the side



## Refurbished Second Hand

### Saws

#### TRS/U 125 year 2006

Planetary saw for rigid plastic pipes with diameters from 10 up to 125mm.

*Advantages and key features:*

Chamfer depth adjustable

Short cutting cycle suitable for high extrusion speeds.

Dynamically balanced cutting rotor. Allows accurate cutting even at high speeds.

Chip extraction system.

Universal clamps. Eight-armed clamps with rubber pads, assuring excellent grip.

They allow to machine pipes of different diameters without operator intervention

Condition: **Refurbished**



The above photo is purely indicative of the model and does not correspond to the TRS/U 125 year 2006 described on the side

### Packaging machines

#### FP63 year 2007

Bagging machine for smooth rigid pipes and belled pipes in ABS, PVC, PE and PP for pipe diameters from 10 to 63mm.

*Advantages and key features:*

High productivity. Approximately 140 packages per hour.

Provides a finished product, which is easily carried and commercially attractive.

Prevents stored pipes from deteriorating as a result of sunlight and dust.

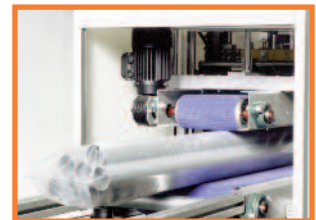
PE film with gauge up to 120 µm. The bundle of pipes is wrapped with a continuous longitudinal seal and two seals closing the ends of the package.

Continuous film feeding. A warning light and audible signal indicate when the film is running out.

System for joining the start of the new roll of film to the one about to run out.

This operation does not stop the machine's work cycle.

Condition: **Refurbished**



The above photo is purely indicative of the model and does not correspond to the FP63 year 2007 described on the side



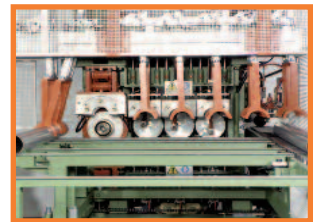
## Refurbished Second Hand

### Belling Machines

#### Everbell 160 year 1987

Belling machines for rigid PP pipes, for single socketing. This machine can process pipes from 32 mm diameter to 160 mm diameter.  
No PSP system.

Condition: **Refurbished**



The above photo is purely indicative of the model and does not correspond to the Everbell 160 year 1987 described on the side

#### Unibell400 W SX year 2005

Belling machines for rigid PVC pipes with socket complete with ring. They can also be equipped with a mandrel for solvent cement socket or a mechanical mandrel.

*Advantages and key features:*

Simple ring loading system, which does not require mechanical parts to be changed when switching production.

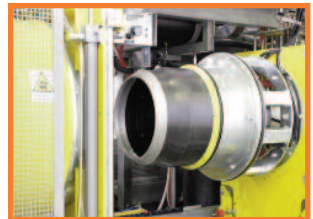
External pressure forming system. Belling assured even for thick-walled pipes.

Two thermoregulated ovens. Optimal heating of even the thickest walls.

Productivity. High hourly production rates

**This particular machine features: water cooling of the socketed pipe and bench for pipe arrival from the left (your back to the extrusion line)**

Condition: **Refurbished**



The above 2 photos are purely indicative of the model and do not correspond to the Unibell400 W SX year 2005 described on the side

### Ring Fitting Unit

#### Masterfit 160 XL year 2006

Automatic devices for inserting pressure rings in the socket's ring seat. Suitable for inline installation next to the belling machines. The MASTERFIT XL features a high-capacity magazine which enables the machine to operate independently for up to 90 minutes. Quick and simple ring loading ensures reduced cycle times.

*Advantages and key features:*

Single or double-wedge inserting systems. Can be used to insert various kinds of rings.

Low-intervention ring storage.

Automatic ring lubrication system that facilitates inserting the gasket.

Quick tool change. No machine adjustments required when pipe diameter and ring type are changed.

The end product is complete with gasket, hence reducing labour costs.

Condition: **Refurbished**



The above photo is purely indicative of the model and does not correspond to the Masterfit XL year 2006 described on the side